



Atalet Yapı Proje İnşaat Sanayi Ticaret Limited Şirketi



+90 (332) 346 09 36
info@ataleyapi.com

ataleyapi.com

Büyükkayacık Mahallesi 513. Sk. No:2 42160
Selçuklu/KONYA Selçuklu / Konya / Türkiye

Foundation Year
2011

Employee Count
50-100

Open Area m2
16500

About Us

Atalet Yapı, with its deep-rooted history and strong structure, is one of Türkiye's leading industrial steel structure manufacturing companies. Based in Konya, Atalet Yapı is committed to providing high-quality and durable structures with its industry experience. Operating from 12,500 m² of indoor facilities built on a total area of 16,500 m² in the Konya Organized Industrial Zone, Atalet Yapı implements effective projects with a commitment to reliability. Constantly managing knowledge with its experienced team, Atalet Yapı stands out as a pioneer in the sector.

Company Officials

Mustafa Turan
Chairman of the Board of Dir... -

Countries We Export To

Germany, Iraq, Australia, Greece

Quality Certifications

- ISO 9001:2008 Quality Management System
- EN 1090-2 EN ISO 3834-2
- ISO EN 3834-2 Welding Manufacture Competence Certifica...

Products



Product
steel construction

GTIP
730890



Product
Elevators Towers and Tremie
buildings

GTIP
730820



Product
Shopping Mall Building Structural
Steel Works Roof

GTIP
730830



Atalet Yapı Proje İnşaat Sanayi Ticaret Limited Şirketi



+90 (332) 346 09 36
info@ataleyapi.com

ataleyapi.com

Büyükkayalık Mahallesi 513. Sk. No:2 42160
Selçuklu/KONYA Selçuklu / Konya / Türkiye

Foundation Year
2011

Employee Count
50-100

Open Area m2
16500

Products



Product
**Additional Factory Building Steel
Structure**

GTIP
000000



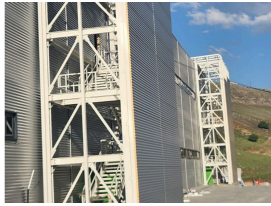
Product
Factory Building

GTIP
730890



Product
Silo

GTIP
730650



Product
Fire Escape

GTIP
730890



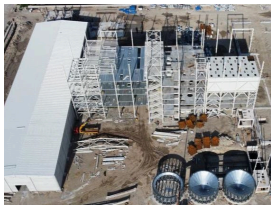
Product
Sailor's Ladder

GTIP
730890



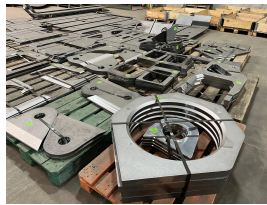
Product
Steel Construction

GTIP
730890



Product
Factory Building

GTIP
730890



Product
Construction Equipment Parts

GTIP
871690



Product
Warehouse

GTIP
730890