



# K.Y.S.Kürkçüoğlu Döküm Rulman Yatakları Ve Otomotiv Sanayi



+90 (332) 342 10 64

info@kys.com.tr

kys.com.tr

Kuddusi Caddesi, No:13 SELÇUKLU / Konya / Türkiye

Foundation Year  
1996

Employee Count  
50-100

Open Area m2  
20000

## Hakkımızda

Among the world's leading companies in the production of Power Transmission Organs, KYS, our company, which was founded with the aim of being a pioneer in its sector, has proven itself first to Turkey and then to all of Europe with its superior quality understanding since the day it was founded. Our company, which started operating in the casting sector in 1985, has also started to produce power and motion transmission organs since the early nineties. Our company, which has been constantly improving itself since the day it was founded, manufactures standard Conical Bushings, V pulleys, Poly-V pulleys, Timing pulleys, Couplings, Fan connection hubs and special sizes according to customer requests. Our company is established on a closed area of 12,000 m2, a total of 20,000 m2, and contributes to our country's economy by exporting to

## Company Officials

	Derviş Kürkcü Chairman of the Board of Dir...	-
	Aleyna KIRBUĞA Foreign Trade Specialist	info@kys.com.tr +90 (332) 342 10 64
	Selcen TIRPANCİ Foreign Trade Specialist	kys@kys.com.tr +90 (332) 342 10 64

## Trademarks

KYS

## Countries We Export To

Germany, France, Switzerland, Italy, The Netherlands, Finland, Israel, Ukraine, The United States of America, Romania, Portugal

## Countries We Import From

Ring

## Kalite Belgeleri

- ISO 9001:2008 Quality Management System
- ISO 9001:2008 Quality Management System

## Products



Product  
V Belt Pulleys

GTIP  
848350



Product  
Poly-V Belt Pulleys

GTIP  
848350



Product  
Timing Belt Pulleys

GTIP  
848350



# K.Y.S.Kürkçüoğlu Döküm Rulman Yatakları Ve Otomotiv Sanayi



+90 (332) 342 10 64

info@kys.com.tr

kys.com.tr

Kuddusi Caddesi, No:13 SELÇUKLU / Konya /  
Türkiye

Foundation Year  
1996

Employee Count  
50-100

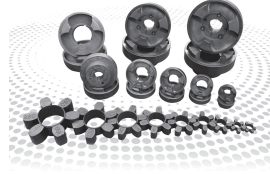
Open Area m2  
20000

## Products



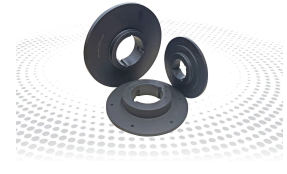
Product  
Cone Clamping Elements

GTIP  
848350



Product  
HRC Couplings

GTIP  
848350



Product  
Bolt On Hubs

GTIP  
848350



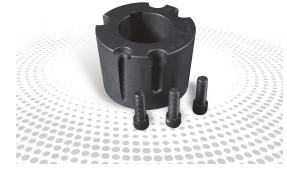
Product  
Bearing Housing

GTIP  
848350



Product  
UC Series Pillow Block Bearings

GTIP  
848350



Product  
Taper Bushes

GTIP  
848350