



MDZ Otomotiv Döküm Makine Sanayi Ve Ticaret Limited Şirketi



+90 (332) 342 10 86
info@mdz.com.tr

mdz.com.tr
Fevzi Çakmak Mah 10605 Sk. No:2 KARATAY /
Konya / Türkiye

Foundation Year
2010

Employee Count
10-25

Open Area m2
200

Hakkımızda

Concrete Pump and Transmixer are indispensable work machines that enable the works to be carried out in a shorter time and in a better quality way in today's ready mixed concrete and construction sector. Our company MDZ Automotive Döküm Makine Sanayi Ltd.Şti. has been serving in the production and supplier of Concrete Pump and Transmixer spare parts since March 15, 2010. MDZ Automotive Döküm Makine Sanayi Ltd.Şti. was established, aiming to fulfill the demands and requests of its customers as soon as possible and completely.

Company Officials

Mehmet Erdem
Chairman of the Board of Dir... -

Countries We Export To

Poland, Saudi Arabia, Tunisia, Spain

Kalite Belgeleri

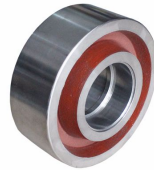
- ISO 9001:2008 Quality Management System
- OHSAS 18001:2007 Occupational Health and Safety Manage...

Products



Product
Transmission Shafts / Cranks /
Bearing Carriers / Gears / Wheels

GTIP
848310



Product
Bearing

GTIP
848210



Product
Automotive Spare Parts

GTIP
870899



MDZ Otomotiv Döküm Makine Sanayi Ve Ticaret Limited Şirketi



+90 (332) 342 10 86
info@mdz.com.tr

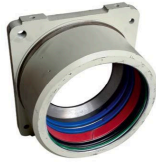
mdz.com.tr
Fevzi Çakmak Mah 10605 Sk. No:2 KARATAY /
Konya / Türkiye

Foundation Year
2010

Employee Count
10-25

Open Area m2
200

Products



Product
Outer Housing

GTİP
847410



Product
Roller 280*160*90

GTİP
841340



Product
Chute Handle Mechanic

GTİP
847410



Product
Extension Chute

GTİP
847431



Product
Elbow 90 Degree 5.5"

GTİP
847410



Product
Elbow 90 Degree 5.5" Reinforced

GTİP
847410



Product
Delivery Pipe 5.5" 3000 MM

GTİP
847410



Product
Valve S2018N

GTİP
847490



Product
Complete Upper Housing Q80

GTİP
732510