



# Metalon Çelik Sanayi Ve Ticaret A.Ş



+90 (332) 502 06 10  
info@metalon.com.tr

metalon.com.tr  
BÜYÜKKAYACIK MAH. REİSKÖY CAD. İNSU SK.  
NO:2 SELÇUKLU / Konya / Türkiye

Foundation Year  
2016

Employee Count  
50-100

Open Area m2  
7600

## Hakkımızda

After years of research, our company observed the gap and need in the sector and decided to establish it in 2016. The first fixtures included in the inventory of the company during the establishment phase are the devices taken to the R&D department and the laboratory. This is due to the importance we attach to quality, development and continuity. Our mentality is not just about sales. We prioritize customer satisfaction and quality after sales. That's why we became the first choice of Turkey's largest mining companies and construction companies. Today, we serve with our product range of 1200 types. This number is increasing day by day with our new design products and material quality with high durability. In our facility equipped with the latest technology, maximum attention is paid to the heat treatment department. We believe that

## Company Officials



İREM BUSE YILDIRIM  
Chairman of the Board of Dir...

i.altincaba@metalon.com.tr  
+90 (332) 502 06 10

## Trademarks

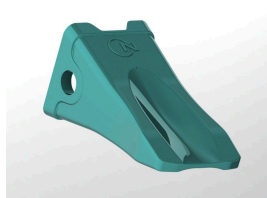
Metalon

## Products



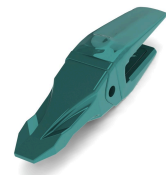
Product  
Bucket Teeth

GTIP  
843149



Product  
Bucket Teeth

GTIP  
843149



Product  
Bucket Teeth

GTIP  
843149



# Metalon Çelik Sanayi Ve Ticaret A.Ş



+90 (332) 502 06 10  
info@metalon.com.tr

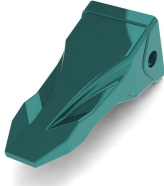
metalon.com.tr  
BÜYÜKKAYACIK MAH. REİSKÖY CAD. İNSU SK.  
NO:2 SELÇUKLU / Konya / Türkiye

Foundation Year  
2016

Employee Count  
50-100

Open Area m2  
7600

## Products



Product  
Bucket Teeth

GTIP  
843149



Product  
Adapters

GTIP  
843149



Product  
Adapters

GTIP  
843149



Product  
Pin

GTIP  
843149