

shoes collection
DEKOSA[®]

Özdede Bilgisayar Metal Ayakkabı Tekstil İnşaat Sanayi Ve



+90 (332) 346 20 89

ozdede_kun@hotmail.com

dekosa.com.tr/index.html

FEVZİÇAKMAK MAH. 10765.SOK. NO : 1/B
KARATAY/ KONYA Karatay / Konya / Türkiye

Foundation Year
2014

Employee Count
10-25

Open Area m2
00

Hakkımızda

ABOUT US

Founded in a small workshop in 1972, Özdede Shoes continued its journey of more than 47 years without compromising the spirit of development, change and collective sharing, currently continues production on a total area of 1200 sqm. The countries in which we trade are; England, Spain, Poland, Russia, Romania, Israel, Kuwait, Saudi Arabia, Egypt, Palestine, Somalia, Azerbaijan, Kazakhstan, Bulgaria. Özdede Kundura aims to bring consumers and customers with high quality, healthy products in accordance with the conditions of the rapidly growing shoe industry and to be one of the leading companies of innovation in the sector. While

Company Officials

Hüseyin Bağcı
Company Owner

ozdede_kun@hotmail.com
+90 533 309 27 56

AHMET DİZLEK
Foreign Trade Specialist

ahmetdizlek@dekosa.com.tr
+90 530 503 62 77

Trademarks

DEKOSA

Countries We Export To

Romania, Russia, Poland, Azerbaijan, Kyrgyzstan, Saudi Arabia, Somalia, Nigeria, United Kingdom, Spain, Israel, Kuwait, Palestine, Egypt,

Kalite Belgeleri

ISO 9001:2015

Products



Product
Shoe

GTIP
640192



Product
Shoe

GTIP
640192



Product
Shoe

GTIP
640192

shoes collection
DEKOSA[®]

Özdede Bilgisayar Metal Ayakkabı Tekstil İnşaat Sanayi Ve



+90 (332) 346 20 89

dekosa.com.tr/index.html

ozdede_kun@hotmail.com

FEVZİÇAKMAK MAH. 10765.SOK. NO : 1/B
KARATAY/ KONYA Karatay / Konya / Türkiye

Foundation Year
2014

Employee Count
10-25

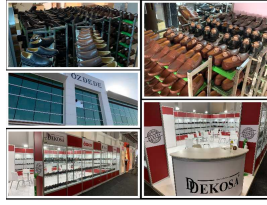
Open Area m2
00

Products



Product
Shoe

GTIP
640192



Product
Shoe

GTIP
640192



Product
Shoe

GTIP
640192



Product
Shoe

GTIP
640192



Product
Shoe

GTIP
640192



Product
Shoe

GTIP
640192



Product
Shoe

GTIP
640192



Product
Shoe

GTIP
640192



Product
Shoe

GTIP
640192