



Remar Stone Dış Ticaret Sanayi Limited Şirketi



+90 (332) 391 41 11
info@remarstone.com

remarstone.com
Sakyatan Mh. Konya Ereğli Cad. No/172/1
KARATAY / Konya / Türkiye

Foundation Year
1997

Employee Count
50-100

Open Area m2
76.000

Hakkımızda

It was established in 1997, we succeeded to build a group of companies all joined together in one mission: "To identify and successfully meet the requirements of growing stone market, worldwide". How? "With quality, experience, flexibility and dynamism".

This approach combined with extraordinary product quality has led to remarkable yearly increases in production and sales. As a result in rather short time we have become one of the major American and European suppliers for Turkish Natural Stone. We established a firm cooperation with the Turkish largest marble/travertine quarries and built a network of stockyards, subsidiary firms and representatives to assure the excellence of our products and the superior quality of our

Company Officials



Mevlüt Müsevitoğlu
Chairman of the Board of Dir...

info@remarstone.com
-

Trademarks

Remar Stone

Countries We Export To

The United States of America, Canada, Australia, Ukraine, Russia, Iraq

Kalite Belgeleri



OHSAS 18001:2007 Occupational Health and Safety Manage...

Products



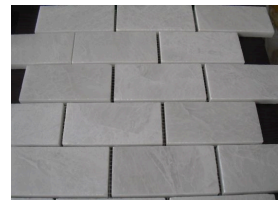
Product
dolomite

GTİP
680221



Product
onyx marble

GTİP
680221



Product
iceberg mosaic on the net

GTİP
680221



Remar Stone Dış Ticaret Sanayi Limited Şirketi

+90 (332) 391 41 11
info@remarstone.com

remarstone.com

Sakyatan Mh. Konya Ereğli Cad. No/172/1
KARATAY / Konya / Türkiye

Foundation Year
1997

Employee Count
50-100

Open Area m2
76.000

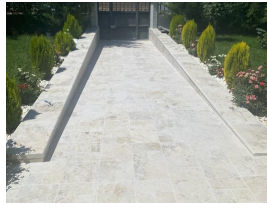


Products



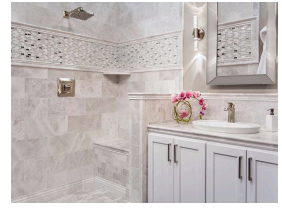
Product
special mosaic

GTIP
680221



Product
grano travertine

GTIP
680291



Product
iceberg marble tile

GTIP
680221



Product
marble mosaic

GTIP
680221



Product
marble ogee 1

GTIP
680221



Product
iceberg pool coping

GTIP
680221



Product
dolomite

GTIP
680221



Product
dolomite lanscape

GTIP
680221



Product
dolomite landscape

GTIP
680221